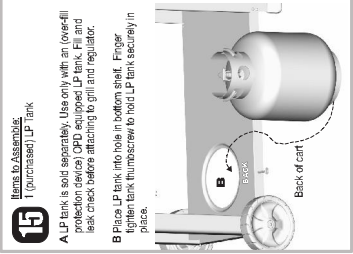


- 14** Items to Assemble:
 3 Vaporizer tents
 2 Cooking Grids
 1 Warming Rack

A Make correct position of vaporizer tents directly over burners.
 B Place cooking grids as shown.
 C Place warming rack in slots on bottom casting.

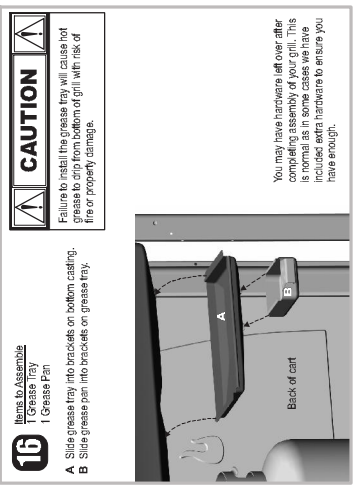


- 15** Items to Assemble:
 1 (purchased) LP Tank

A LP tank is sold separately. Use only with an (over-fill protection device) OPD equipped LP tank. Fill and leak check before attaching to grill and regulator.
 B Place LP tank into hole in bottom shelf. Finger tightener tank thumbscrew to hold LP tank securely in place.

CAUTION
 Tank collar opening must face to front of cart once tank is attached.
 Failure to install tank correctly may allow gas to leak, resulting in fire or explosion, or damage to grill.

See the Use & Care manual to correctly install the LP tank. Leak test and do the Burnt Flaming Check.



- 16** Items to Assemble:
 1 Grease Tray
 1 Grease Pan

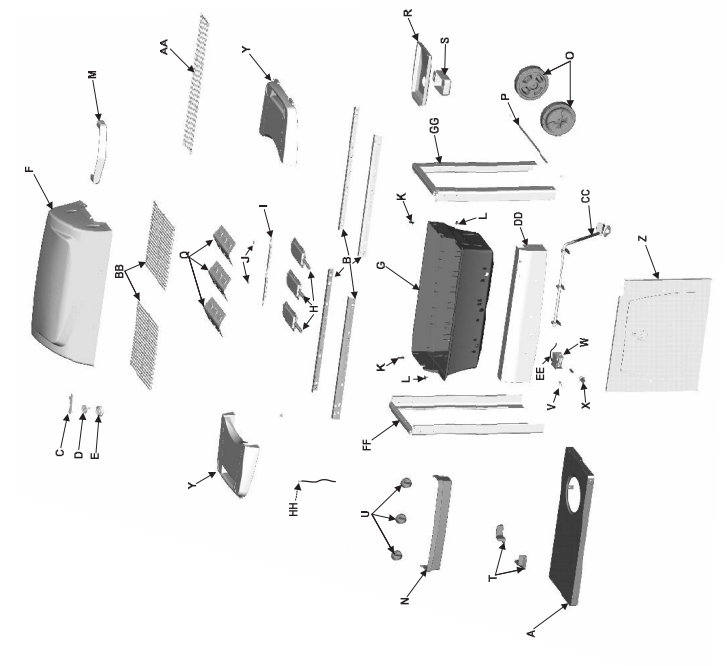
A Slide grease tray into brackets on bottom casting.
 B Slide grease pan into brackets on grease tray.
 You may have hardware left over after completing assembly of your grill. This is normal as in some cases we have included extra hardware to ensure you have enough.

CAUTION
 Failure to install the grease tray will cause hot grease to drip from bottom of grill with risk of fire or property damage.

Parts List - Model 463351305

Key	Qty.	Description	Part #
A	1	Bottom Shelf	7000478
B	4	Rails	7000286
C	1	Logo Plate	4157147
D	1	Temperature Gauge	7000361
E	1	Temperature Gauge Bezel	4157169
F	1	Top Casting	7000435
G	1	Bottom Casting	7000844
H	3	Burners	7000083
I	1	Canyover Tube	7000278
J	2	Pat Nuts	7000132
K	3	"U" Nuts	7000185
L	2	Casting Bumpouts	7000184
M	1	Handle	7000184
N	1	Condiment Basket	7000347
O	2	Wheels	7000262
P	1	Axle Rod	7000265
Q	3	Vaporizer Tents	7000381
R	1	Grease Tray Assy	7000042
S	1	Grease Pan	7000046
T	2	Leg Extenders	7000230

Key	Qty.	Description	Part #
U	3	Control Knobs	7000009
V	1	Electrode w/NUJ	7000378
W	1	Ignition Module	7000160
X	1	Ignition Button w/Battery	7000162
Y	2	Shelves	7000350
Z	1	Front Panel	7000440
AA	1	Warming Rack	7000180
BB	2	Cooking Grids	7000028
CC	1	Valve/Hose/Regulator Assy	7000054
DD	1	Console Assembly	7000787
EE	1	Igniter Wire	7000893
FF	1	Leg, Long	7000445
GG	1	Leg, Short	7000446
HH	1	Ground Wire Connector	7000360
..	1	Hardware Bag	7000871



Char-Broil
 KEEPERS OF THE FLAME

ADVANTAGE
 SERIES

PRECISION GRILLING TECHNOLOGY

ASSEMBLY MANUAL
 463351305
 THIS GRILL IS FOR
 OUTDOOR USE ONLY

CAUTION: Read and follow all safety statements, assembly instructions and use and care directions before attempting to assemble and cook.

WARNING: Leave these instructions with consumer. Refer to these instructions for future reference.

CONSUMER: Keep this manual for future reference.

Failure to follow all manufacturer's instructions could result in serious personal injury and/or property damage.

CAUTION: Some parts may contain sharp edges - especially as noted in the manual. Wear protective gloves if necessary.

If you have any questions or need assistance during assembly, please call 1-800-241-7518.
 Visit us on the web at www.charbroil.com